



REPRESENTATIVE BOB GODFREY

DEPUTY SPEAKER | PROUDLY SERVING DANBURY

Toll Free: 1-800-842-1902 | Bob.Godfrey@cga.ct.gov

Dear Neighbor,

In the past decade, Connecticut has made a number of important reforms to our criminal justice system. I've worked hard to pass stronger gun safety laws, change how we treat juvenile offenders, and end practices that discriminated against the poor.

Here's the good news - ***these reforms are working!*** Gun deaths are down, we're closing prisons because the inmate population is shrinking, and crime rates have hit historic lows in the last 5 years.

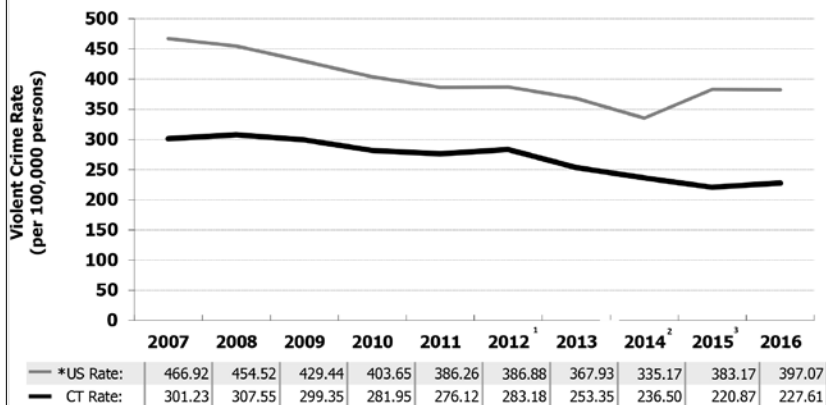
Making sure Danbury residents feel safe in our neighborhoods is a priority of mine. I hope you'll read the rest of this mailer for information on the positive impacts of our criminal justice reforms.

PRSRT STD
U.S. POSTAGE
PAID
HARTFORD, CT
Permit No. 3937

STATE REPRESENTATIVE
BOB GODFREY

Violent Crime

The sum of all murder, rape, robbery, and aggravated assault offenses that occur within a particular time (e.g., year 2015) and location (e.g., Connecticut). See glossary for full FBI definition.



Crime in Connecticut has decreased significantly over the last decade

THE REFORMS: CREATING A FAIRER JUSTICE SYSTEM

- Strengthening gun safety laws after the tragic Sandy Hook shooting
- Closing the Connecticut Juvenile Training School and moving juvenile offenders to community-based settings to receive counseling and services
- Prosecuting young adults who have committed low-level crimes as juveniles
- Eliminating cash bail in most circumstances, as it unfairly punished poorer individuals
- Increasing efforts to help ex-offenders find jobs and reintegrate into society

THE RESULTS: CRIME IS DOWN

Overall reported crime in Connecticut in 2016 was the lowest since 1967. From 2012 to 2016, violent crimes in Connecticut decreased by 20 percent, the greatest decline in the country.

Additionally, new data shows that recidivism rates steadily declined from 2011 to 2014 (this data is compiled in 3-year periods). Recidivism is when an ex-offender commits another crime.

This decline means we have fewer people in our prisons - the prison population is projected to drop by 726 prisoners, or approximately 5.25 percent, over the next year. The Governor recently announced the prison in Enfield is closing due to the decreased inmate population, saving the state taxpayers money.

Legislative Office Building, Hartford, CT 06106-1591
Toll Free: 1-800-842-1902 | Email: Bob.Godfrey@cga.ct.gov
www.housedems.ct.gov/Godfrey