

# ENERGY SAVING TIPS



## TURN DOWN YOUR THERMOSTAT

You can easily save 5% or more a year by turning your thermostat down 10° to 15° for at least 8 hours a day.



## OPEN & CLOSE YOUR BLINDS

Make sure your blinds and curtains are open during the day, allowing sunlight into the house. Close blinds at night in order to trap heat.



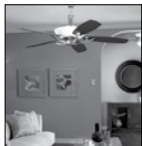
## WINTERIZE YOUR WINDOWS & DOORS

Use plastic film to cover your windows. Inspect door frames to make sure no drafts are coming into your home.



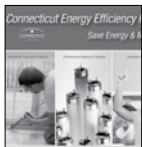
## CHECK YOUR FURNACE

Clean your air filters so that your heating system works more efficiently.



## USE YOUR CEILING FAN

Set your fan to blow air towards the ceiling. This will allow even heating in the room.



## CONTACT YOUR UTILITY COMPANY

Many offer tips by phone, email or website. Some will send a representative to your home. Eversource: 800-286-2828  
CT Natural Gas Company: 860-727-3034



## GET AN ENERGY AUDIT

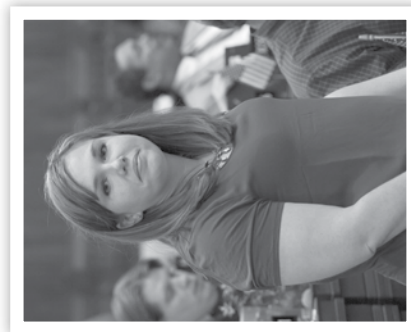
Energize CT offers free home energy assessments (audits) for qualified applicants. To learn more, visit [www.energizect.com/residents/solutions](http://www.energizect.com/residents/solutions).

PRSR-T STD  
U.S. POSTAGE  
PAID  
HARTFORD, CT  
Permit No. 3937

STATE REPRESENTATIVE

# Kelly JS Luxenberg

Representing Manchester | 12th Assembly District



# HELP WITH HEATING COSTS

Dear Neighbor,

Winters in Connecticut are cold, and some families have a hard time covering high heating bills. There is help out there! Several programs can help us all keep costs lower and save energy. Please read this mailer to find out more.

Please do not hesitate to call my office if you have any questions or need more information. My staff and I are eager to do what we can to help you make it through the winter months.

Sincerely,

FOR MORE HELP PLEASE CONTACT  
MY OFFICE OR DSS AT  
[WWW.CT.GOV/STAYWARM](http://WWW.CT.GOV/STAYWARM)

STATE REPRESENTATIVE

# Kelly JS Luxenberg

Legislative Office Building  
Hartford, CT 06106-1591  
Capitol: 860-240-8585  
[Kelly.Luxenberg@cga.ct.gov](mailto:Kelly.Luxenberg@cga.ct.gov)  
[www.housedems.ct.gov/Luxenberg](http://www.housedems.ct.gov/Luxenberg)



# CONNECTICUT ENERGY ASSISTANCE PROGRAM

Connecticut's winter heating assistance program for low-income households pays for most heating sources, including natural gas, electricity, oil, propane, coal, wood and wood pellets.

The exact level of benefits is based on the number of members in the household, the household's income, and whether it is a "vulnerable" household. Households with a lower income will be eligible for a higher amount of assistance.

## DO YOU PAY SEPARATELY FOR HEAT?

If you live in a **vulnerable household** (one or more members are age 60 or older, have a disability, are under age 6) then you may qualify for up to \$585 in winter heating assistance. If you live in a **non-vulnerable household** you may qualify for up to \$535 in winter heating assistance.

## IS YOUR HEAT INCLUDED IN YOUR RENT?

You may still be eligible for up to \$100 - \$120 in winter heating assistance depending on the household's income and number of members.

TO APPLY FOR THESE PROGRAMS, SCHEDULE AN APPOINTMENT BY CALLING THE MANCHESTER WEISS CENTER AT **(860) 647-3095**

OR

CONTACTING **2-1-1** INFOLINE OR THE DSS OFFICE OF COMMUNITY SERVICES AT **1-800-842-1132**.

FOR MORE INFO ON THESE AND OTHER STATE-ADMINISTERED PROGRAMS CHECK OUT THE HOUSING/SHELTER TAB AT **WWW.CT.GOV/DSS**



# THE WEATHERIZATION ASSISTANCE PROGRAM

If you qualify for the Connecticut Energy Assistance Program, you may also be eligible for the Connecticut Weatherization Assistance Program. This program helps low-income persons minimize energy-related costs and fuel usage in their homes through retrofits and home improvement measures.

Priority is given to households with members that are particularly vulnerable, such as the elderly, those with disabilities, families with children and high energy users. For multi-family dwellings, at least two-thirds of the tenants must be income-eligible.

For more information contact [DEEP.Weatherization@ct.gov](mailto:DEEP.Weatherization@ct.gov). If you are not eligible, there are other programs available. Find out more by contacting your utility company.



# OPERATION FUEL

A network of fuel banks that helps families and small businesses, Operation Fuel is committed to providing assistance to the residents of Connecticut who may have no other option to cover energy costs. While approval is income-based, their private dollars allow them to help anyone in an energy crisis.

FOR MORE INFORMATION, CHECK OUT THEIR WEBSITE AT [WWW.OPERATIONFUEL.ORG](http://WWW.OPERATIONFUEL.ORG)

## AVOID SHUT OFFS

Most gas and electric utility companies participate in programs for low-income residents who are falling behind on their heating bills, and a Winter Protection Program that may help avoid shutoffs.

FOR MORE INFORMATION,  
CONTACT YOUR UTILITY COMPANY.  
EVERSOURCE: 800-286-2828  
CT NATURAL GAS COMPANY: 860-727-3034

STATE REPRESENTATIVE

# Kelly JS Luxenberg



Legislative Office Building  
Hartford, CT 06106-1591  
Capitol: 860-240-8585  
[Kelly.Luxenberg@cga.ct.gov](mailto:Kelly.Luxenberg@cga.ct.gov)  
[www.housedems.ct.gov/Luxenberg](http://www.housedems.ct.gov/Luxenberg)