

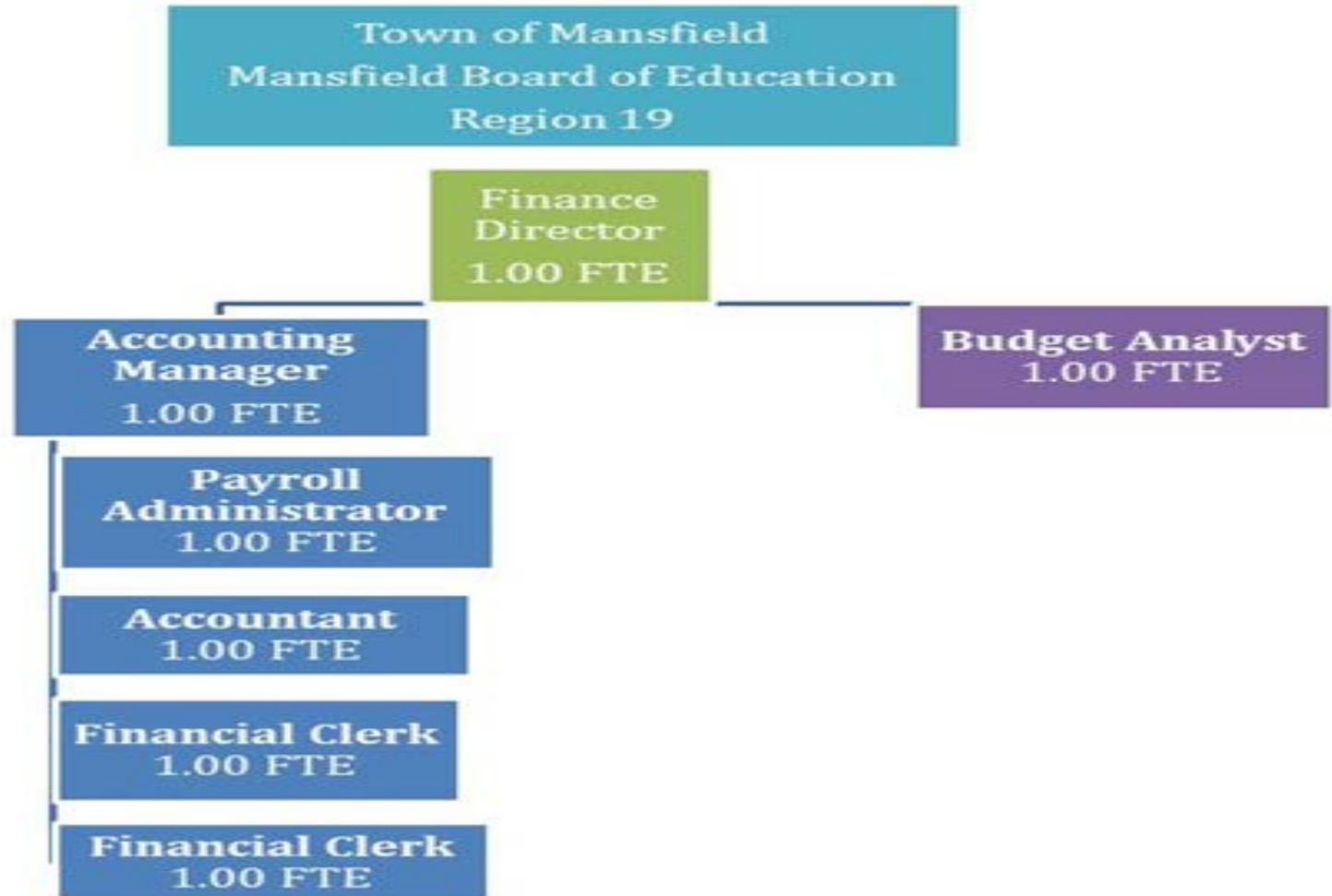


Integrating School-Town Operations
MORE Commission, Municipal Efficiencies
July 21, 2015
Matt Hart, Town Manager, Mansfield, CT

PARTNERS

- Town of Mansfield
 - Home of UCONN main campus in Storrs
 - Pop ~ 26,500; approx. 12-13,000 year round
 - GF budget ~ \$47M; \$70M all funds
 - 155 FTE
- Mansfield Public schools (preK-8)
 - Enrollment ~ 1250 students
- Region No. 19 (EO Smith High School)
 - Enrollment ~ 1200 students

FINANCIAL MANAGEMENT



FINANCIAL MANAGEMENT

	FY 14/15	Town	Board	Region
Finance Department	\$688,710	\$375,690	\$139,800	\$173,220
		55%	20%	25%

FACILITIES MANAGEMENT

**Town of Mansfield
Mansfield BOE**

**Facilities
Managment
Director**
1.00 FTE

**Assistant Facilities
Managment
Director**
1.00 FTE

**Maintanence
Technicians**
4.00 FTE

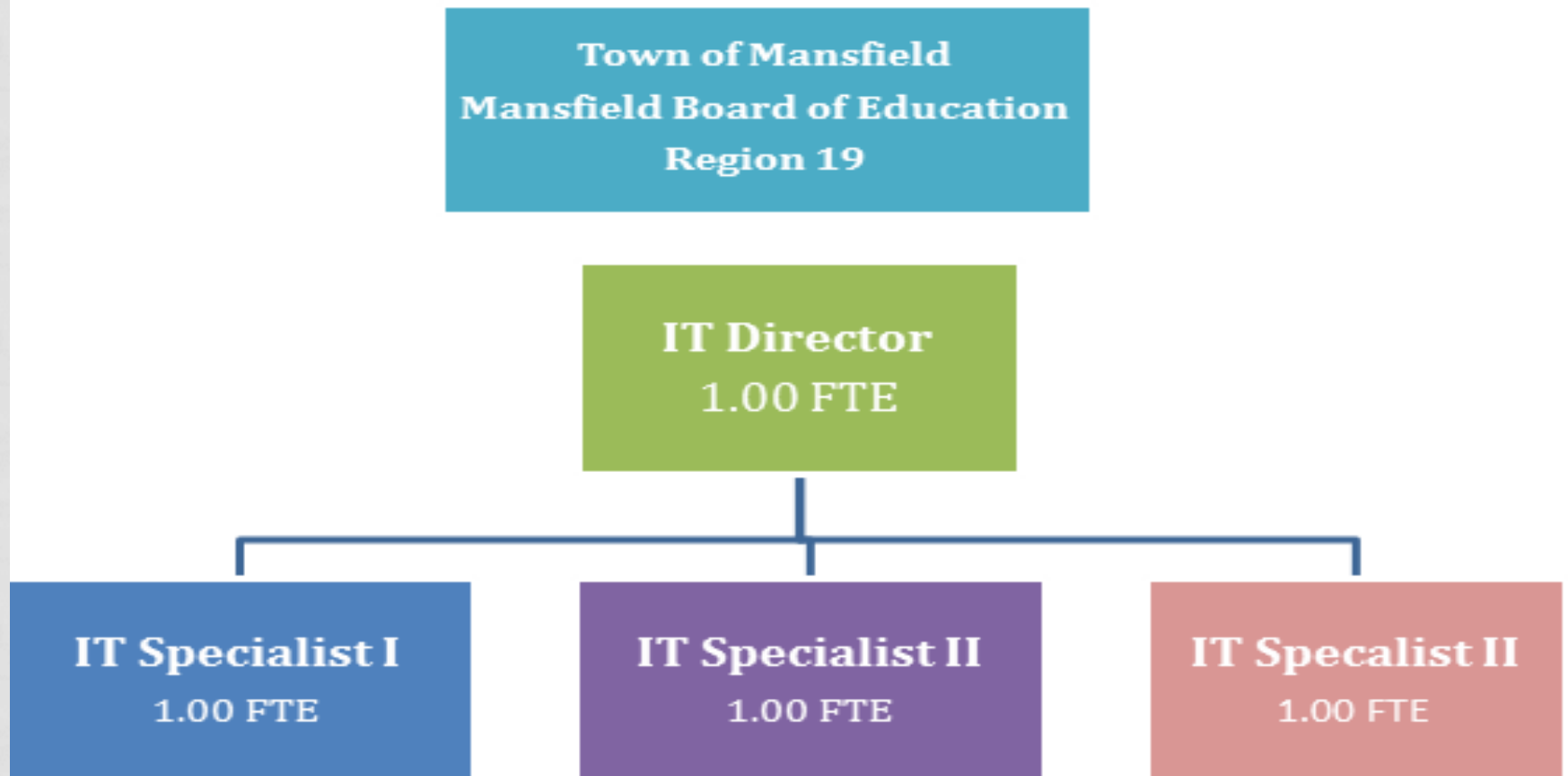
Custodians
14.00 FTE

**Administrative
Assistant**
1.00 FTE

FACILITIES MANAGEMENT

	FY 14/15	Town	Board	Region
Facilities Management	\$2,097,040	\$763,600	\$1,333,440	
		36%	64%	

INFORMATION TECHNOLOGY (IT)



INFORMATION TECHNOLOGY (IT)

	FY 14/15	Town	Board	Region
IT	\$761,100	\$494,110	\$154,570	\$112,420
		65%	20%	15%

RISK MANAGEMENT

- Town, MBOE and Region 19 - same workers' compensation and liability, automobile and property insurance carrier
- Town/MBOE combined employee safety and wellness committee – conduct safety walkthroughs of town and school district facilities

EMPLOYEE BENEFITS

- Self insured pool with approx. 1700 covered lives
- Award winning wellness program
- Management team
 - Town Manager
 - Superintendent of Schools (2)
 - Finance Director
 - Assistant Town Manager
 - Wellness Coordinator
 - Broker/consultant

GROUNDS MAINTENANCE

- DPW provides grounds maintenance for Mansfield Public Schools
- DPW provides snow removal and parking lot maintenance for Region 19

PROS AND CONS

- Pros

- Capture economy of scale - significant savings at senior management level
- Everyone knows where the money is
- Relationship building – become partners

- Cons

- Managerial staff can be stretched thin
- Loss of some autonomy
- Assumption of liability (real or perceived)