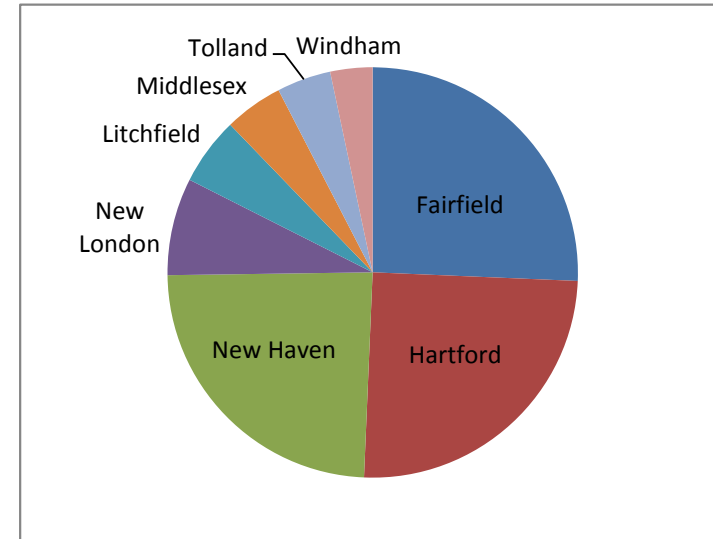


## 2010 Population, by County

| County     | Population | % of State |
|------------|------------|------------|
| Fairfield  | 916,829    | 25.7%      |
| Hartford   | 894,014    | 25.0%      |
| New Haven  | 862,477    | 24.1%      |
| New London | 274,055    | 7.7%       |
| Litchfield | 189,927    | 5.3%       |
| Middlesex  | 165,676    | 4.6%       |
| Tolland    | 152,691    | 4.3%       |
| Windham    | 118,428    | 3.3%       |

State Population 3,574,097

Source: 2010 U.S. Census (Summary File 1, Table P1)

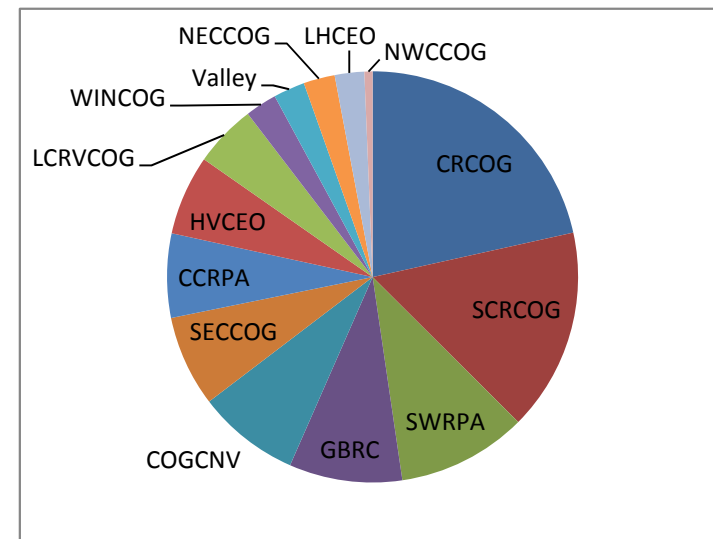


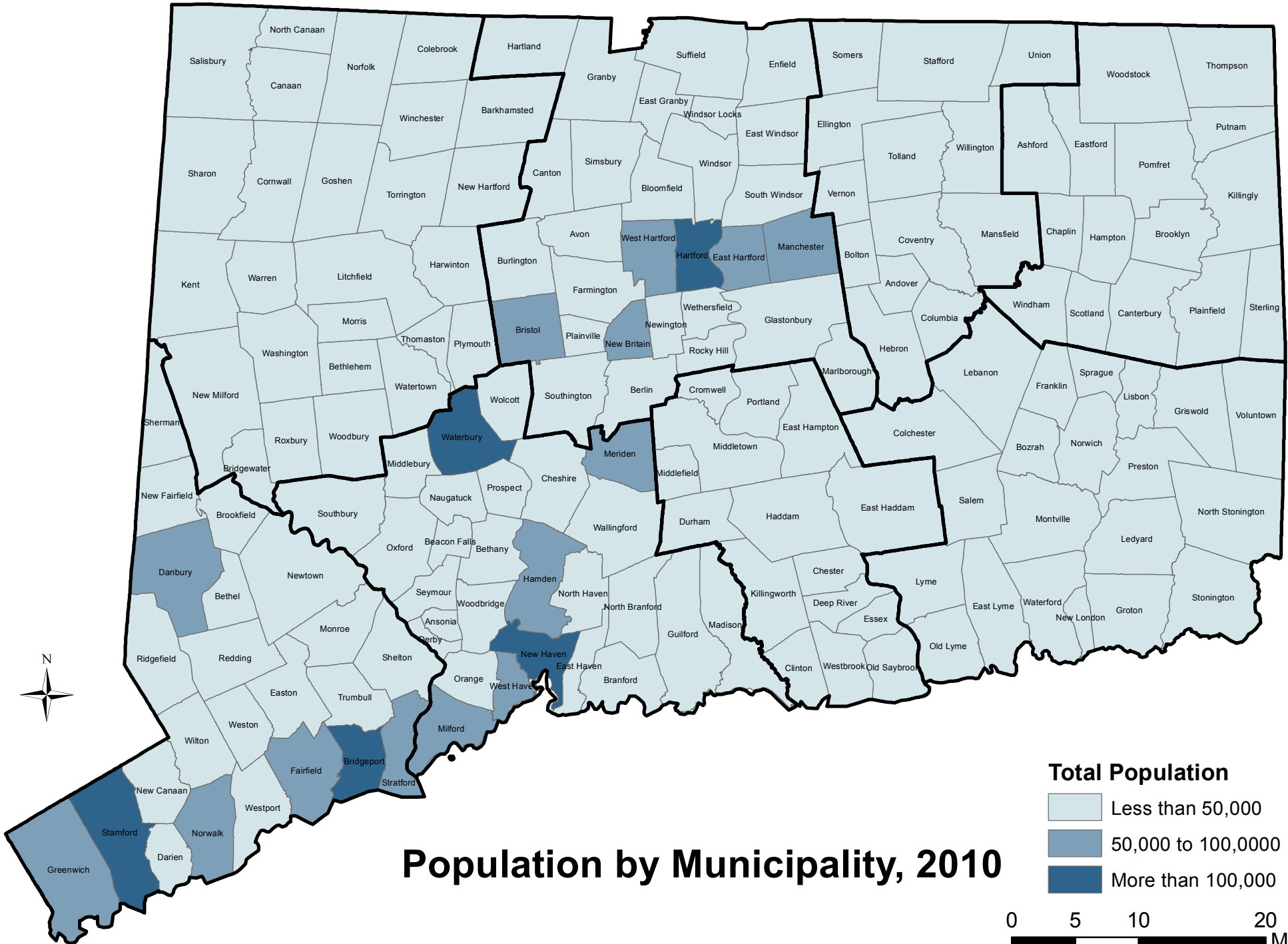
## 2010 Population, by RPO

| Regional Planning Organization      | Population | % of State |
|-------------------------------------|------------|------------|
| Capitol Region COG                  | 769,598    | 21.5%      |
| South Central Regional COG          | 570,001    | 15.9%      |
| South Western RPA                   | 364,519    | 10.2%      |
| Greater Bridgeport Regional Council | 318,004    | 8.9%       |
| COG of the Central Naugatuck Valley | 287,768    | 8.1%       |
| Southeastern Connecticut COG        | 256,738    | 7.2%       |
| Central Connecticut RPA             | 235,878    | 6.6%       |
| Housatonic Valley CEO               | 224,616    | 6.3%       |
| Lower Connecticut River Valley COG  | 175,685    | 4.9%       |
| Windham Region COG                  | 88,974     | 2.5%       |
| Valley COG                          | 88,250     | 2.5%       |
| Northeastern Connecticut COG        | 88,120     | 2.5%       |
| Litchfield Hills CEO                | 83,174     | 2.3%       |
| Northwestern Connecticut COG        | 22,772     | 0.6%       |

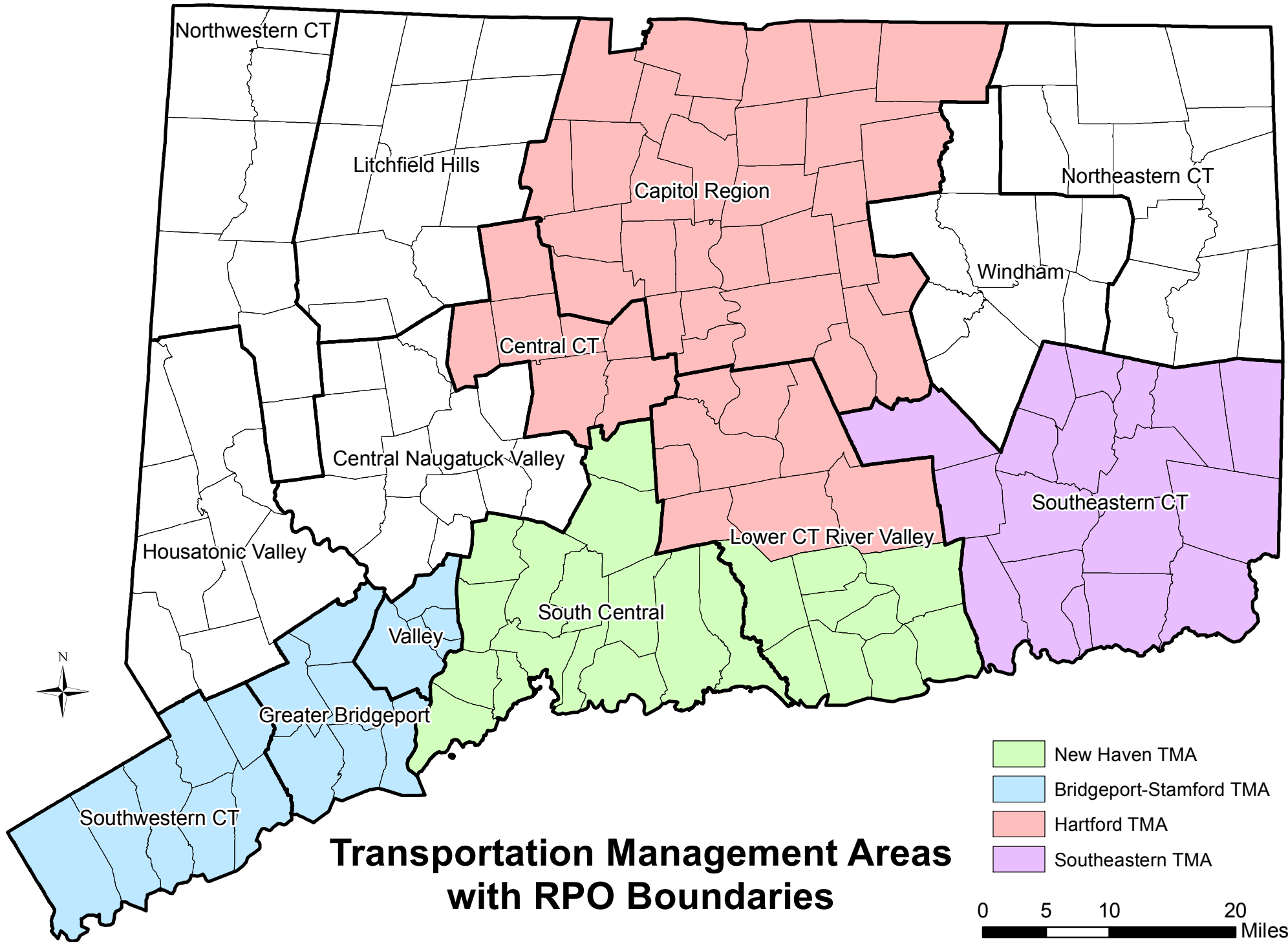
State Population 3,574,097

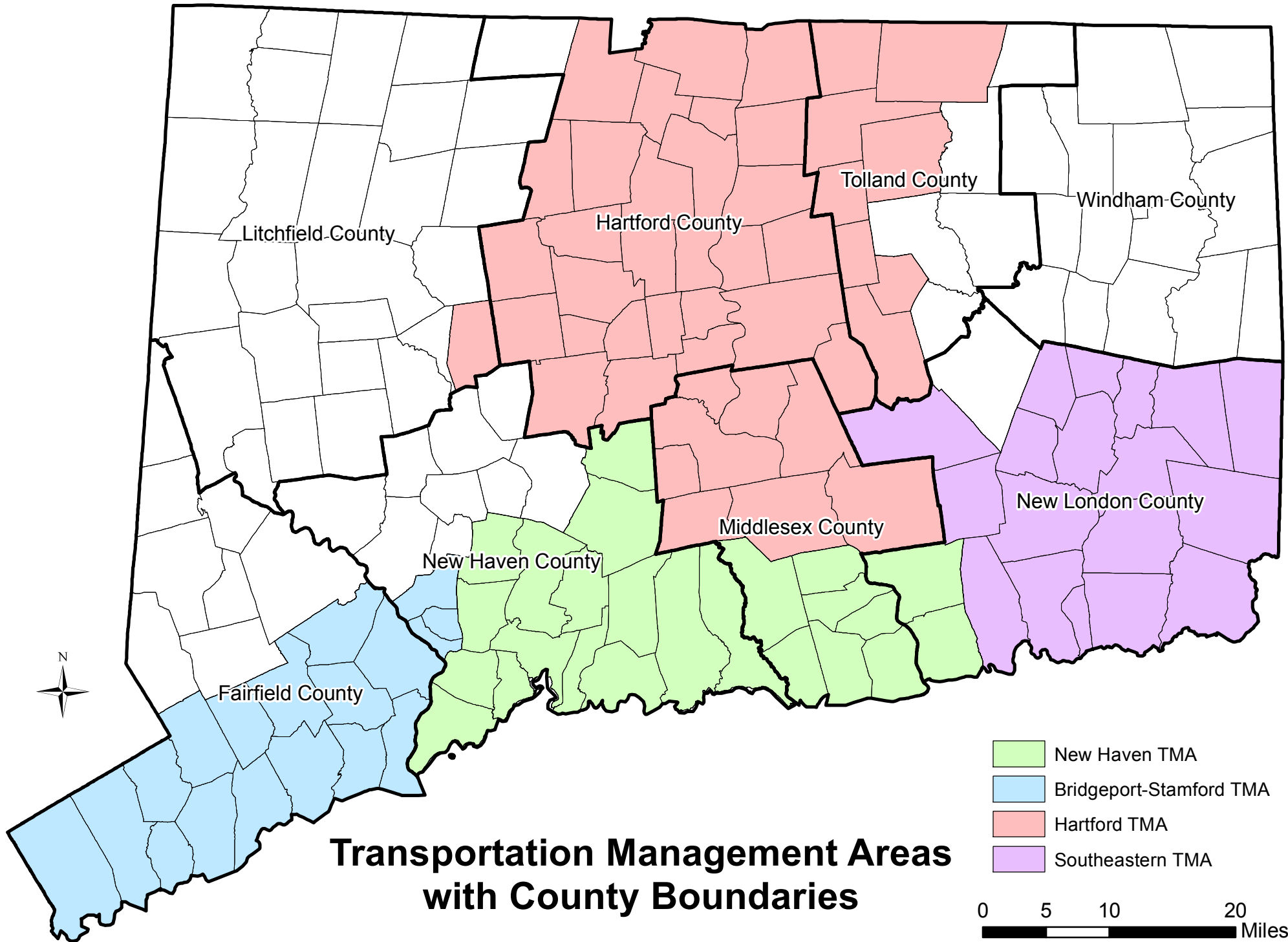
Source: 2010 U.S. Census (Summary File 1, Table P1)





# Population by Municipality, 2010

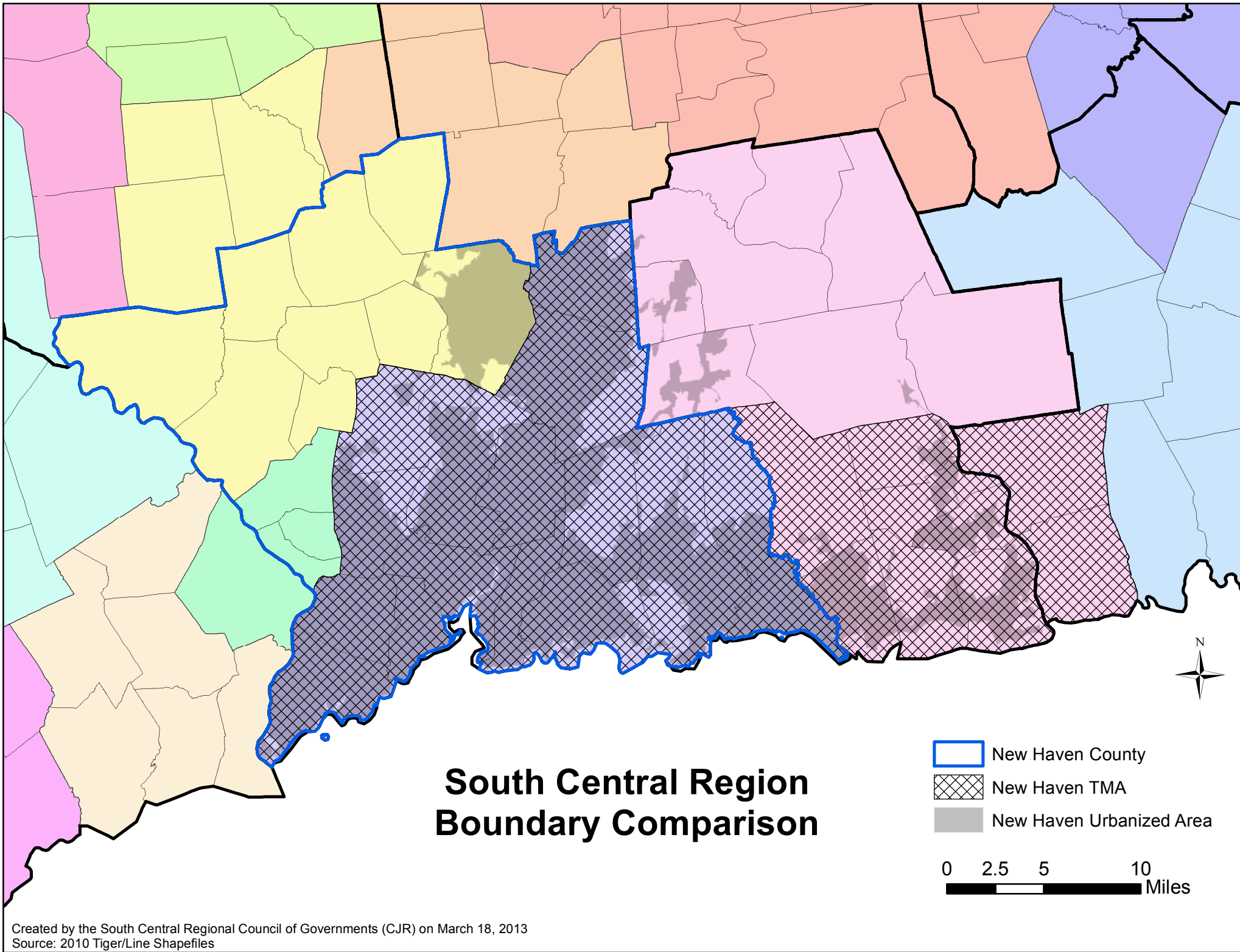




## Transportation Management Areas with County Boundaries

- New Haven TMA
- Bridgeport-Stamford TMA
- Hartford TMA
- Southeastern TMA

0    5    10    20  
 Miles

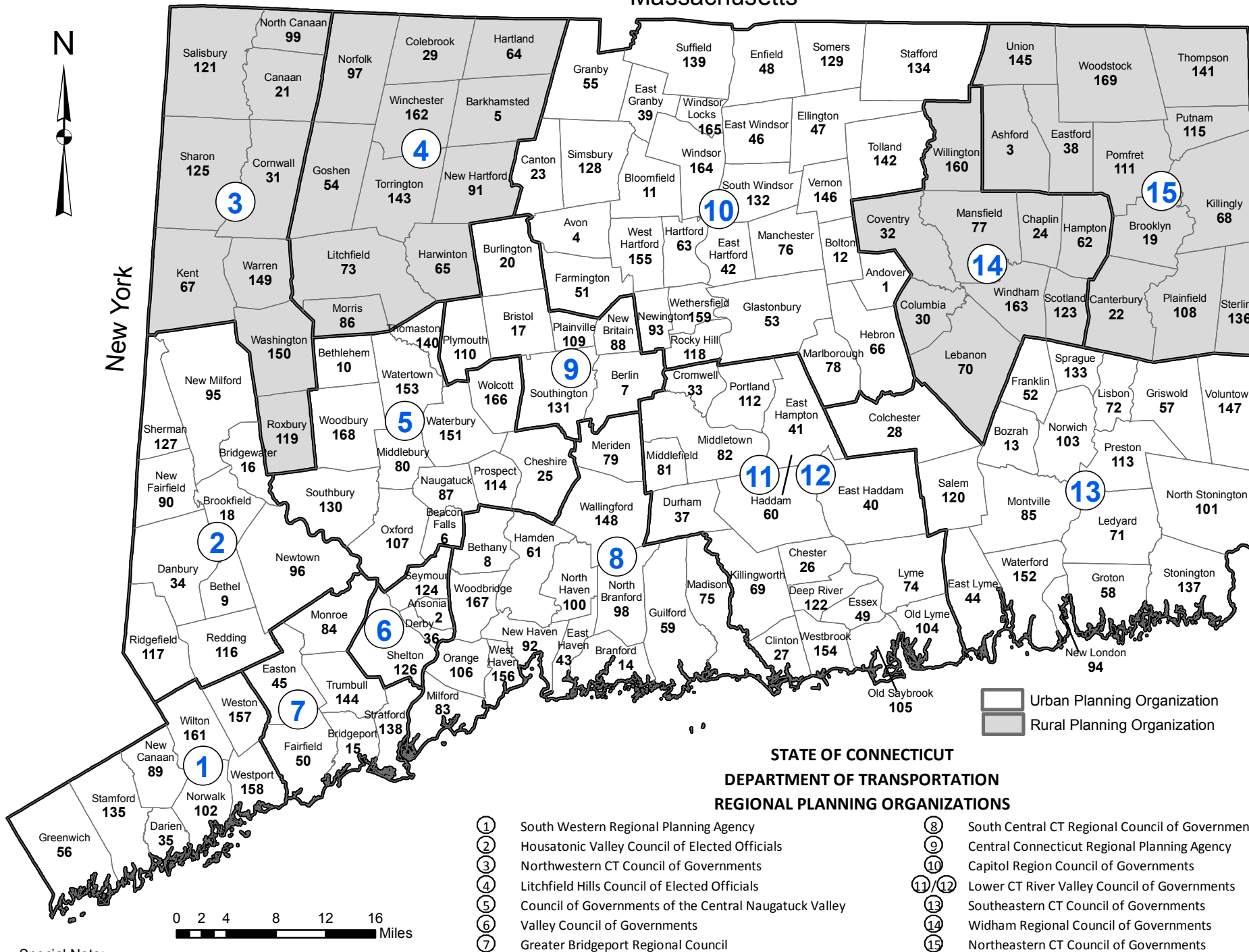


# Massachusetts



New York

Rhode Island



**Special Note:**

Each of the urban RPOs is part of a metropolitan planning organization (MPO). Greater Bridgeport Regional Council (7) and Valley Council of Governments (6), work jointly on MPO related duties as one board. And, the Lower Connecticut River Valley Council of Governments (11/12) was recently formed from two separate planning regions. As such, at the time of this publication, the RPO is still designated as two separate MPOs by the federal government.