

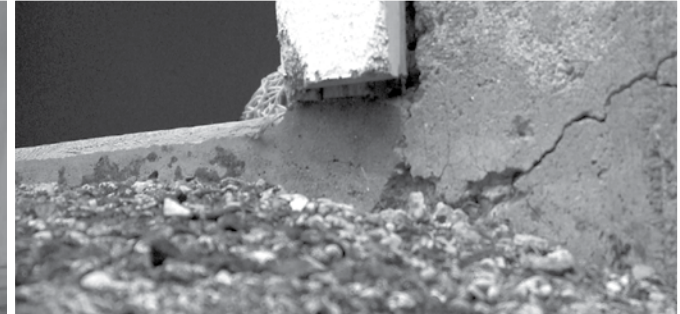


STATE REPRESENTATIVE

**PAT BOYD**



[www.facebook.com/RepBoyd](https://www.facebook.com/RepBoyd)



Over the past few years, some homeowners in our community have discovered that their concrete foundations are beginning to crumble and crack. This damage is distinct from normal concrete wear, with spider cracks and deterioration that can cost tens of thousands of dollars to fix or even more to replace.

A recent study by the Department of Consumer Protection discovered that a mineral called pyrrhotite is the cause of this damage. When concrete containing pyrrhotite is exposed to water and oxygen, it expands and causes the distinctive cracking. To make matters worse, the damage doesn't appear until a decade or more after pouring the foundation.

I wanted to share some information with you so you can recognize the signs of pyrrhotite damage and the steps you can take if you are affected. I am committed to doing all that I can to help my constituents in this terrible situation.

Sincerely,

A handwritten signature in black ink, appearing to be 'Pat Boyd'.

Legislative Office Building, Hartford, CT 06106-1591 | Phone: 860-240-1372

Email: [Pat.Boyd@cga.ct.gov](mailto:Pat.Boyd@cga.ct.gov) | [www.housedems.ct.gov/Boyd](http://www.housedems.ct.gov/Boyd)

PRSR STD  
U.S. POSTAGE  
PAID  
HARTFORD, CT  
Permit No. 3937

# STATE REPRESENTATIVE PAT BOYD

## SIGNS OF PYRRHOTITE DAMAGE

- Horizontal or “spider” cracks
- White powder in or around cracks
- Rust-colored stains
- Widening cracks
- Bowed or flaking walls



## WHAT YOU SHOULD DO IF YOU THINK YOU ARE AFFECTED

The first step is to contact a structural engineer to confirm that there is pyrrhotite present. Once confirmed, you must submit a complaint form with the Department of Consumer Protection. (The form can be found online at: [www.ct.gov/dcp/lib/dcp/Complaint\\_Form-Concrete2016.pdf](http://www.ct.gov/dcp/lib/dcp/Complaint_Form-Concrete2016.pdf)) You may want to file a claim with your insurance company, however most claims have been denied.

Last year, we passed a law requiring towns to reassess affected properties in order to lower the tax burden on their owners. In order to be reevaluated, you must contact your town assessor and have obtained a written evaluation from a professional engineer indicating that the damage was caused by defective concrete.

I am continuing to fight for further legislation so homeowners affected by this problem can find some relief. Please feel free to contact me with any questions you may have.

## SIGN UP FOR EMAIL

Please sign up for my email list. That way I can keep you up to date on this issue and save on costly printing and postage.

Please fill out the information below and return the form to my office or better yet, visit my website and sign up at [www.housedems.ct.gov/Boyd](http://www.housedems.ct.gov/Boyd)

Name \_\_\_\_\_

Address \_\_\_\_\_

Town & Zip Code \_\_\_\_\_

Your Email Address \_\_\_\_\_

**Save A Stamp!**

**Reply at my website or call my office:**

**[www.housedems.ct.gov/Boyd](http://www.housedems.ct.gov/Boyd)**